



XcRTVd@C @



<86-769-82078888 <86-769-87732448  
400-6789-443 [www.ifelift.com](http://www.ifelift.com)

On

m .

AACHHE

**IFE** 快意电梯



快乐运载 恒久支持  
MOVING & SERVING

A 002774  
A A A A  
11  
5 33  
100  
300 2000  
1000



GRACES

T2



IDCC MALL



JKCC MALL

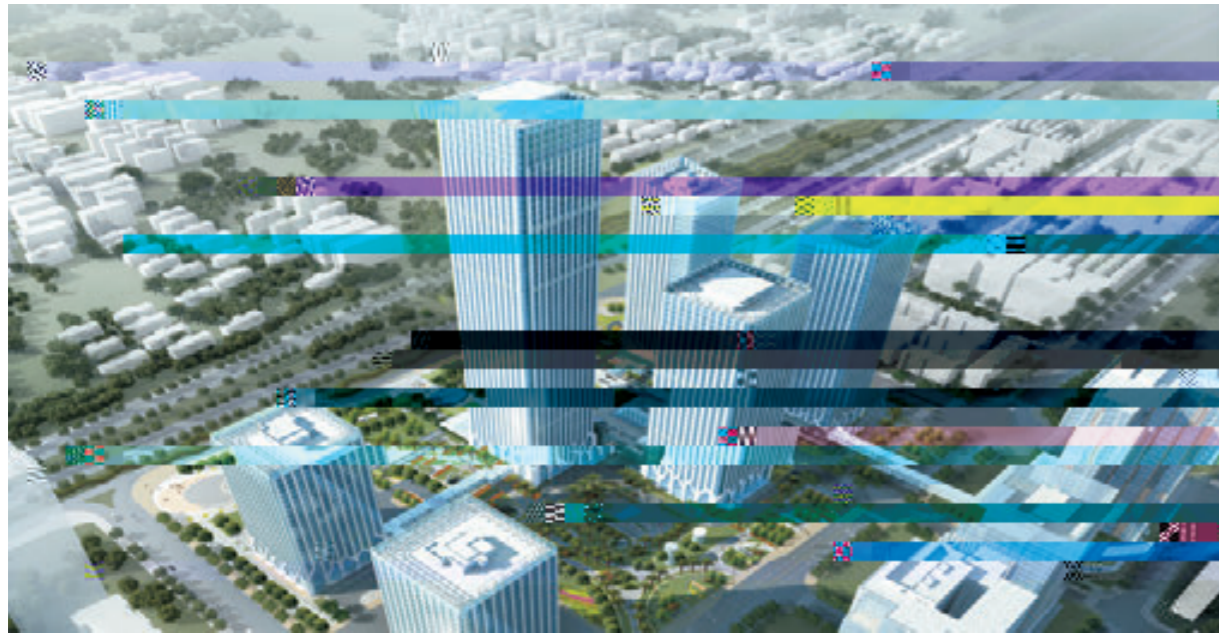


BAI HOTEL



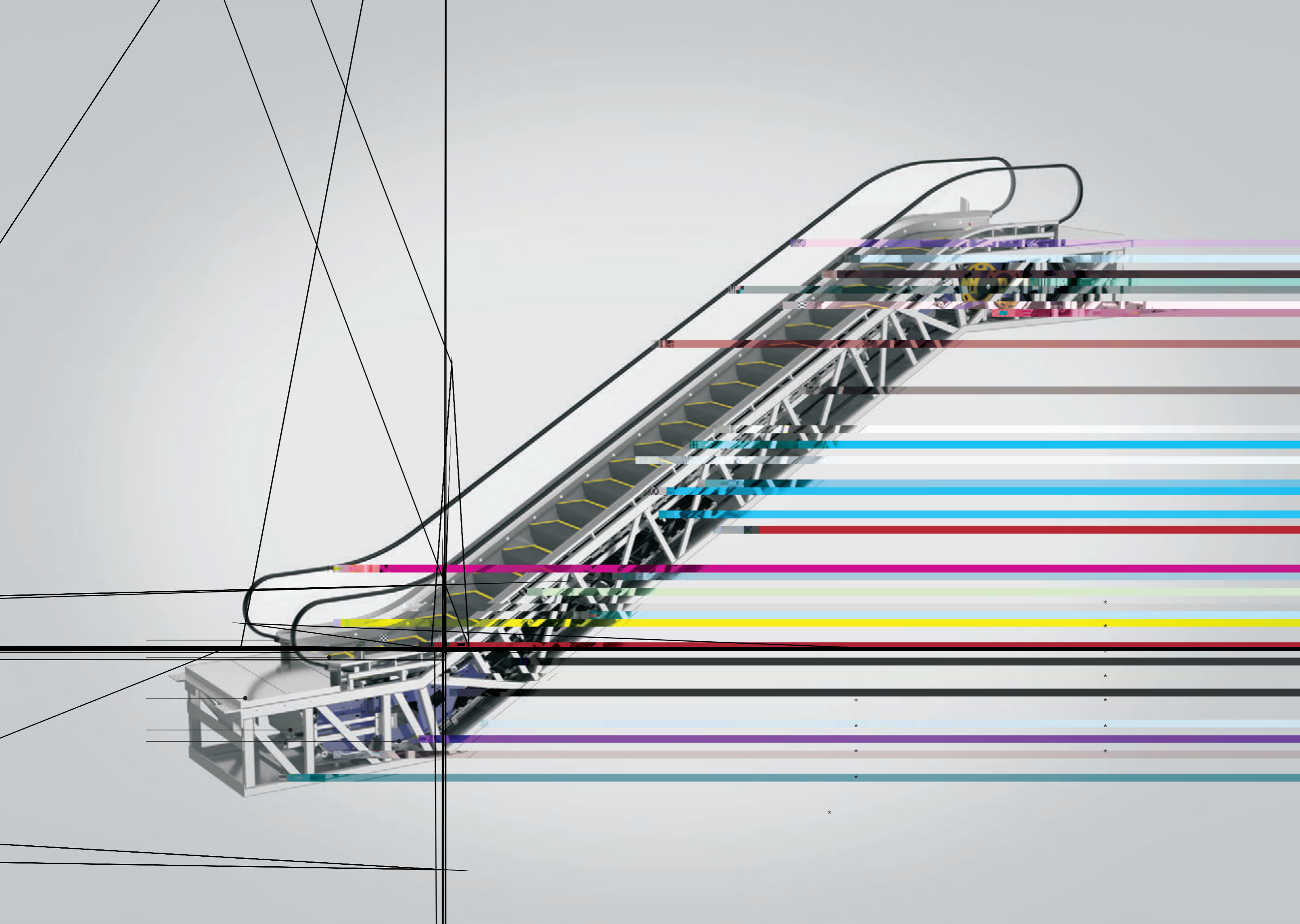
CE>19

PAIMERAH



SOHO





5~15s,PESRAE

15%



R10

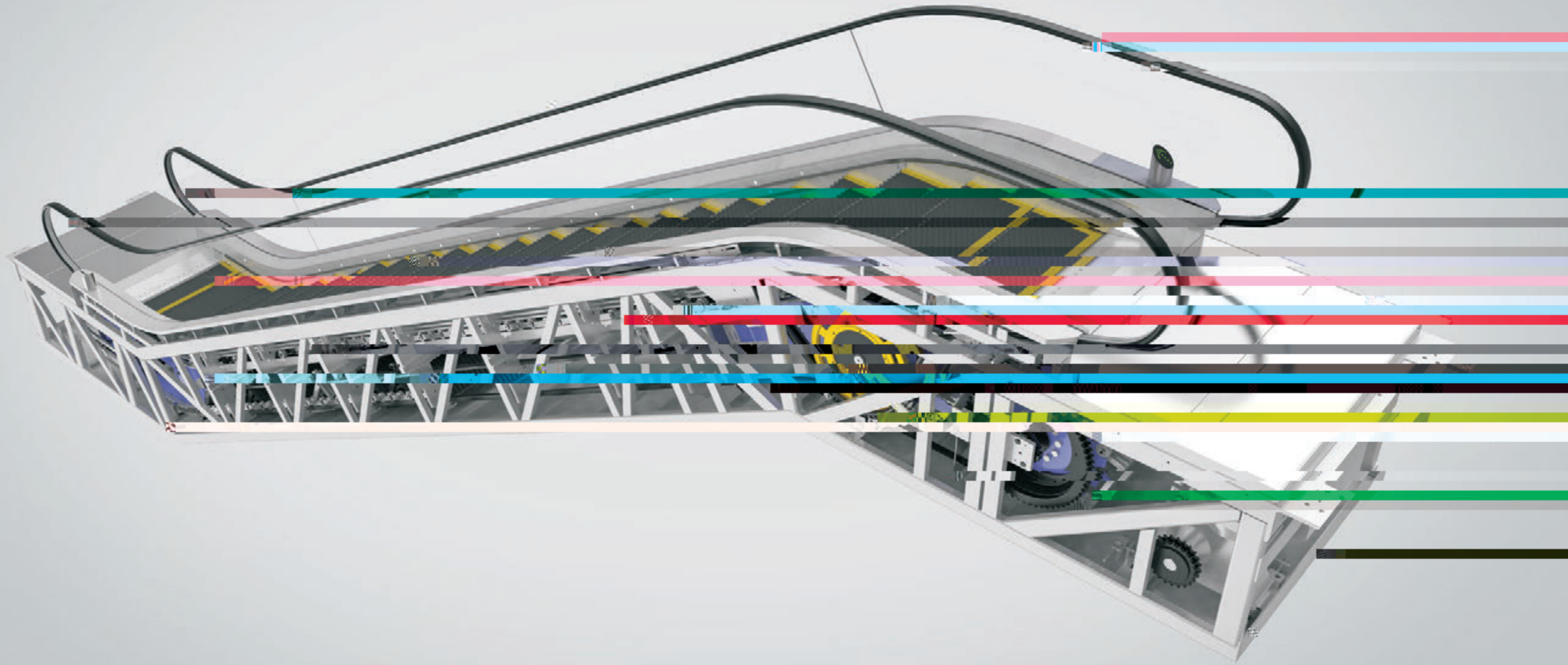
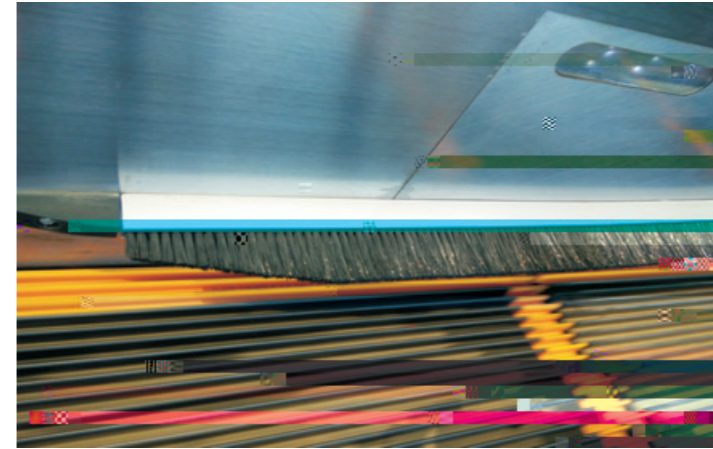
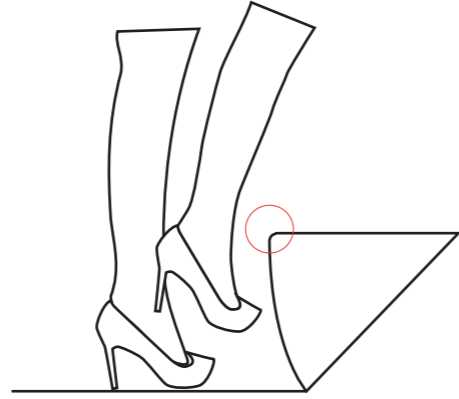
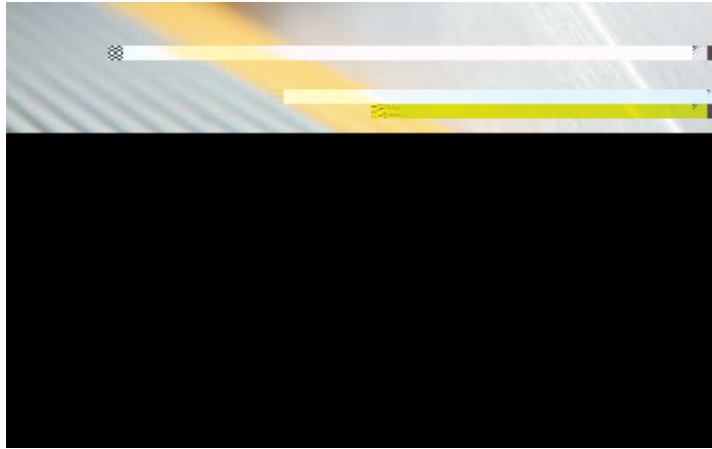
EHC =

DIN51130

=

>  
>  
>  
>  
>  
@

1.4



TV

Tf

**MIRTEC** International Association of Manufacturers' Representatives  
**BETRAM** International Association of Manufacturers' Representatives

**CERTIFICATE OF CONFORMITY**  
(MANUFACTURER INTERNAL CHECK APPLICATION ACTING AS CE (Annex VII, 2006/42/EC))  
Certificate No. 201806-016219

Appl./Certificat holder: **BE ELEKTROS CO., LTD.**  
Address: **210000 04, Industrial Zone, Chitral, Chitapan**  
Country: **Guatemala**

Submission date: **30.08.2018**

Manufacturer: **SARL S. THE APPLICANT**

Product range: **GRACER 30-800 GRACER 30-800**  
**GRACER 30-800 GRACER 30-800**  
**GRACER 30-1000 GRACER 30-1000**  
Models: **(TECHNICAL SPECIFICATIONS IN ANNEX I)**  
**(MOTOR POWER CONFIGURATION TABLE ANNEX II)**

Technical file No: **TEF-001-04-20180621**  
CE Declaration: **MACHINERY DIRECTIVE 2006/42/EC**  
Applicable Standards: **EN 1218 0.2017**

Appl. No: **201806-016219**  
Date & Number of Test Report: **MCHN/A-016219/30/08/2018**

**Result of the assessment - Declaration:**  
The assessment machinery department of MIRTEC S.A. certifies that the above manufacturer has completed a technical file according to requirements of annex VII A, 2006/42/EC, which file has been described on May 2018 for assessment of implementation of the manufacturer internal control according to annex VII, 2006/42/EC.

The Manufacturer certifies for years carry out the internal control, also a declaration of conformity according to the basic requirements of the relative directive and places the **CE** marking with his own responsibility. The manufacturer is responsible for the conformity of the product with the requirements of the CE marking.

Essential changes of designing and manufacturing of the machine must be declared to MIRTEC S.A.

Place / Date of issue: **ATYEN, 28.08.2018**  
Validity of the certificate: **31.08.2019**

For MIRTEC S.A. **Director**   
Director Mirtec Office

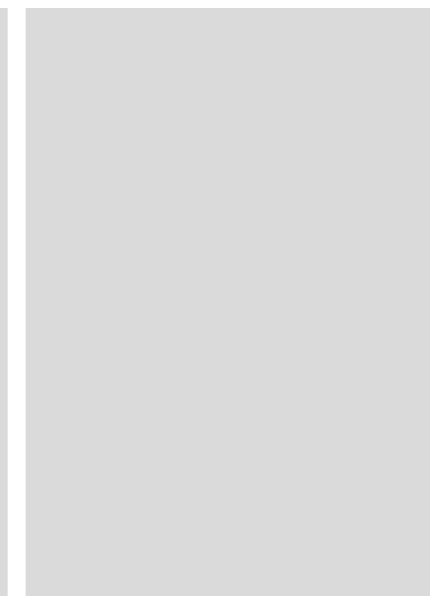
For MIRTEC S.A. **Director**   
Director Mirtec Office

**MIRTEC S.A.** **Director**   
Director Mirtec Office

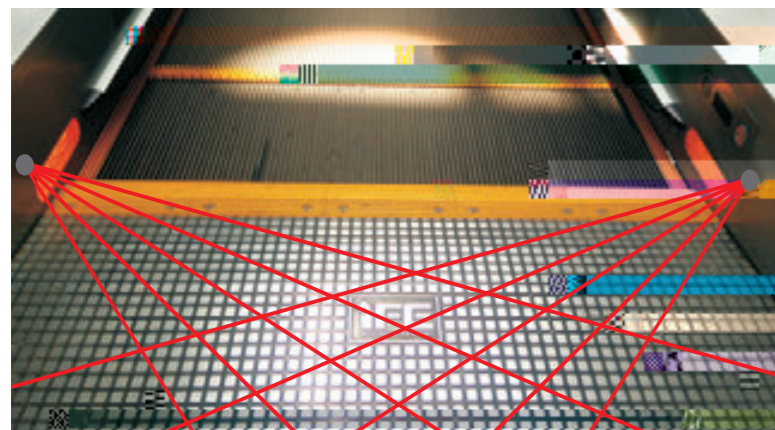
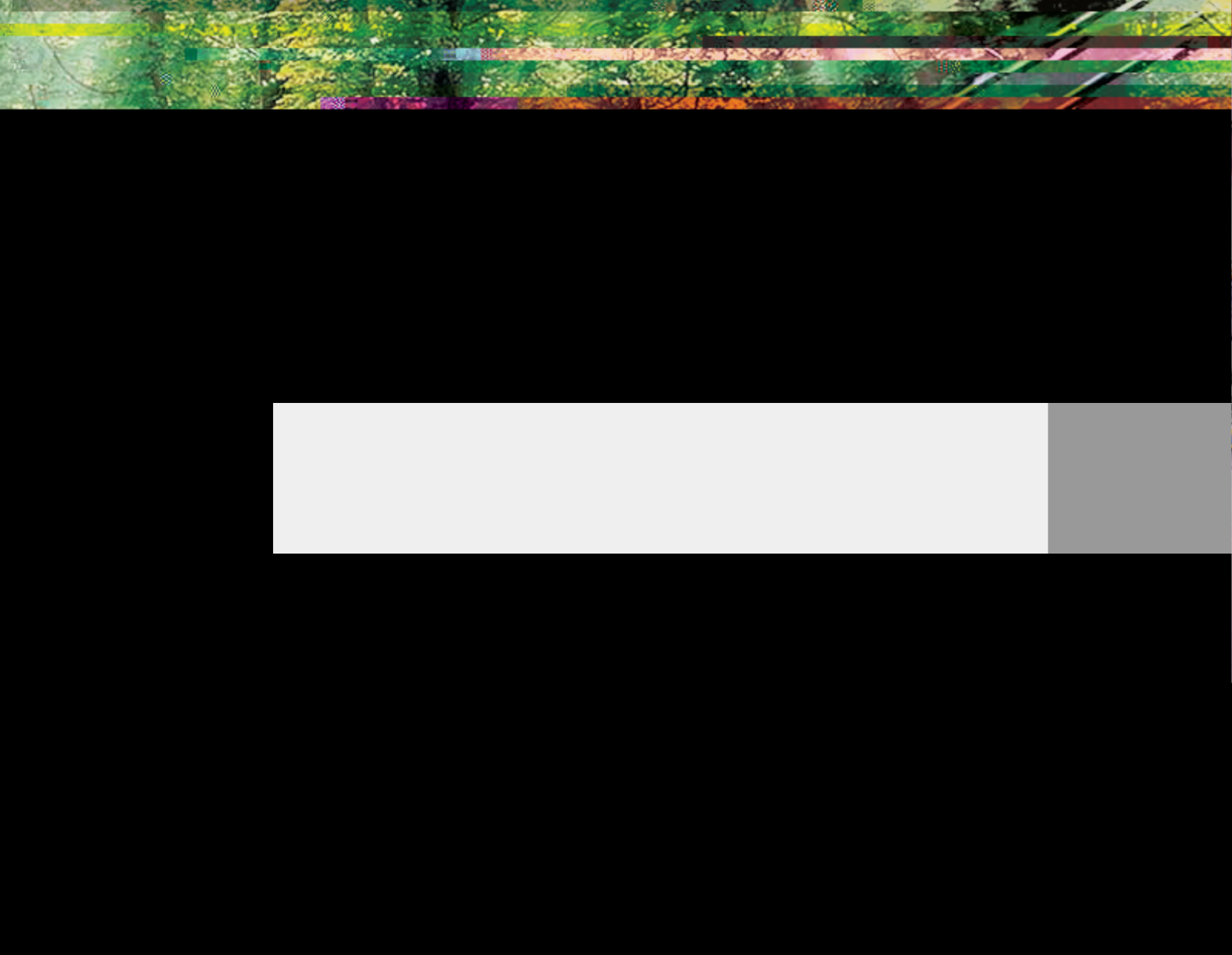
**MIRTEC S.A.** **Director**   
Director Mirtec Office

**MIRTEC S.A.** **Director**   
Director Mirtec Office

**MIRTEC S.A.** **Director**   
Director Mirtec Office







	DA°		DF°	
	1500mm	H 8000mm	1500mm	H 6000mm
XcRTVd-ZJ	1500mm	H 8000mm	1500mm	H 6000mm
GRACES-III	1500mm	H 8000mm	1500mm	H 6000mm
GRACES-LD	1500mm	H 9500mm	1 1	@ 9 ;
GRACES-HD	1500mm	H 18000mm	1 1	@ 9 ;
T2	L 48906mm			

H 9mm: L 9mm:



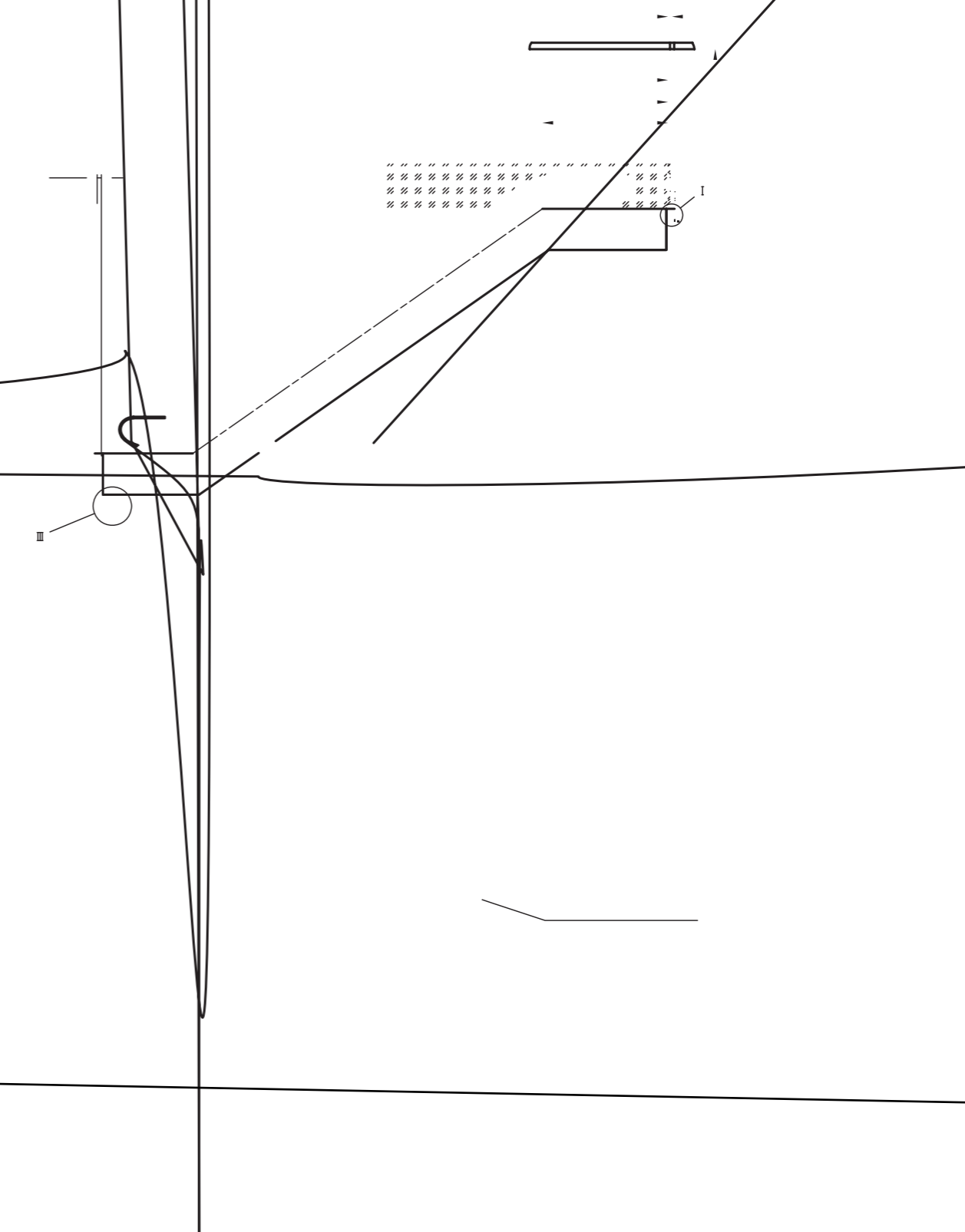


XcRTVd ZZ>DA°(Y G~ )

XcRTVd ZZ>DF°(Y G~ )

	600	800	1000
a	600	800	1000
b	837	1037	1237
c	1840	2040	2240
d	1150	1350	1550
e	1270	1470	1670
f	5182	4765	4765
g	2984	2567	2567
h	857	440	440
i	7168	6751	6751

K1 R1 R2      R1 R2      kN  
 11112?      2  
 3?      1 11      900m  
 11114?  
 111111



XcRTVd ]U>DA°(Y F~ )

9mm:	9mm:	9kg:	R1 9kN:	R2 9kN:	9kW:
1000	3000	6300	76	61	8
	3500	6700	80	65	
	4000	7100	84	69	11
	4500	7500	88	73	
	5000	8300	93	78	

K1 R1 R2 R1 R2 kN  
 3? 1 900m  
 4? 1 900m

9mm:	9mm:	R1 9kN:	R2 9kN:	H1 9mm:	H2 9mm:	L1 9mm:	L

K1 R1 R2 R3 R4 R1 R2 R3 R4 kN  
 3? q1N0'0052 q2N0'0053  
 4? 1 900m  
 5? 1 900m

